

# Reveal 3-D for Egg Procedure

Note: Please read kit instructions completely before performing test.

## Rinse Sampling



1. Open Type 8 extraction buffer sachet and add to a sample tube.



2. Add 0.25 mL of sample to the sample tube.

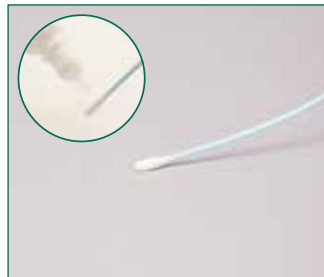


3. Secure cap and shake for 1 minute.

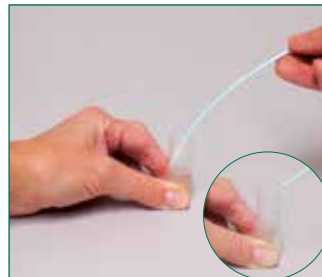
## Swab Sampling



1. Open Type 8 extraction buffer sachet and add to a sample tube.



2. Gather the sample. *For dry surfaces moisten with swab wetting solution. Do not premoisten for wet surfaces.*



3. Return the swab to the extraction buffer and break off into the tube.



4. Secure cap and shake for 1 minute.

## Sample Testing



1. Remove the lid and fill with liquid from the tube.



2. Dip the Reveal 3-D device into the liquid in the lid; ensure that the cavity is saturated with the liquid.



3. Leave the cavity saturated until the liquid is seen running into the test window.



4. Place the device on a flat surface and allow the test to develop for 5 minutes.



5. Interpret the results.

**#902082Q**

**Reveal 3-D for Egg**

**Rinse:** 5 ppm  
**Swab:** 10 µg/100 cm<sup>2</sup>  
**Testing time:** 5 minutes

**Materials Provided**  
10 purple test devices  
10 sample tubes and caps  
10 sachets of Type 8 extraction buffer  
10 sterile swabs  
1 bottle swab wetting solution

Call **800/234-5333** to order or  
visit us online at [www.neogen.com](http://www.neogen.com)



800-234-5333 (USA/Canada) or 517-372-9200  
[foodsafety@neogen.com](mailto:foodsafety@neogen.com) | [foodsafety.neogen.com](http://foodsafety.neogen.com)

