

Neogen Filter/Ampouled Media

Enumeration and detection of microorganisms



Intended Use

The Neogen Filter test system utilizes 2 mL ampouled media to enumerate and detect a wide variety of microorganisms in liquid samples.

The Test

Add up to 100 mL of liquid sample and filter by applying a vacuum. Add ampouled media and apply a very brief vacuum. Remove the funnel and place the Neogen Filter cover over the filter/base assembly, converting the unit to a Petri dish. Place a plug onto the open bottom port of the unit and place into the incubator upright at the appropriate temperature for a specified period of time. See package insert for complete instructions.

Neogen Filter, white (6550) – 100 mL sterile disposable membrane filtration unit used for testing liquid samples. Membrane is white with dark grid lines, 56 mm in diameter with a pore size of 0.45 µm.

Neogen Filter, black (6555) – 100 mL sterile disposable membrane filtration unit used for testing liquid samples. Membrane is black with light grid lines, 56 mm in diameter with a pore size of 0.45 µm.

m-Endo Broth, 2 mL (6500) – Used for enumerating coliforms and recommended by the American Public Health Association for testing water, wastewater, and foods following the U.S. EPA water test method. Membrane filters are examined for the presence of red colonies. All red colonies that have a metallic sheen are coliforms.

m-Green Yeast and Fungi Broth, 2 mL (6505) – Used for the detection of yeast and fungi in beverages. All colonies growing on the surface of the membrane should be counted. Mold colonies generally appear white with a green tint and filamentous, while the yeast colonies are cream colored and opaque.

MI Broth, 2 mL (6510) – Developed and approved by the U.S. EPA for the detection of Total Coliforms and *E. coli* in drinking water. All colonies that appear blue on the surface of the membrane under normal/ambient light are *E. coli*. When exposed to long wave ultraviolet light (366 nm), all fluorescent colonies should be counted. The blue/green colonies that fluoresce or have fluorescent edges are *E. coli* and the blue/white colonies that fluoresce are Total Coliforms. Add any blue, non-fluorescent colonies to the Total Coliform Count.

m-TGE Broth, 2 mL (6515) – Used for the determination of bacterial counts and specified by the American Public Health Association for the heterotrophic plate count procedure in testing bottled water. All colonies that grow on the surface of the membrane are counted and recorded.

Orange Serum Broth, 2 mL (6525) – Used for and recommended by the American Public Health Association for the cultivation of aciduric microorganisms associated with spoilage in fruit beverages. All colonies that grow on the surface of the membrane are counted and recorded.

Neogen Corporation

800/234-5333 • 517/372-9200 • E-mail: foodsafety@neogen.com

Neogen Europe

+44 (0) 1292 525600 • E-mail: info@neogeneurope.com

PRY Broth, 2 mL (6520) – PRY Broth is used for the detection of preservative resistant yeast in water and beverages. Membrane filters are examined for the presence of spoilage organisms that appear off-white and vary in size depending upon length of incubation. These small colonies are viewed best on a black membrane.

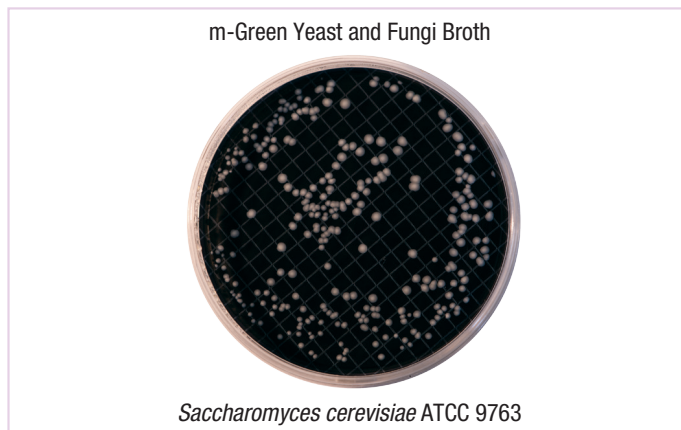
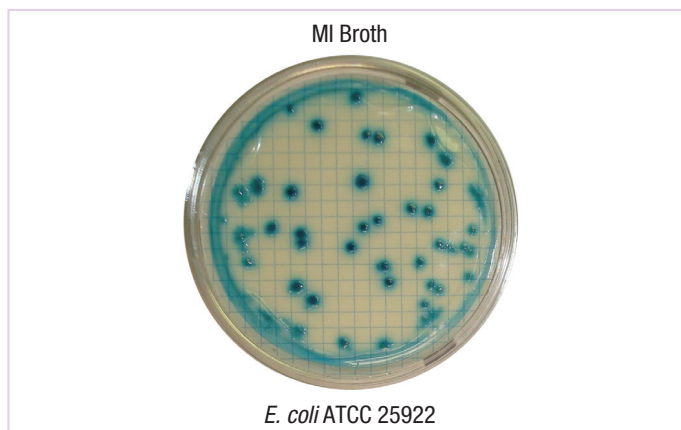
Neogen Filter Specifications

Pore size:	0.45 µm
Volume:	100 mL
Diameter:	56 mm
Tests per kit:	50

Ampouled Media Specifications

Volume:	2 mL
Storage:	2–8°C
Tests per kit:	50

Results



Ordering Information

Prod.#	Product description
6550	Neogen Filter, white – Box of 50
6555	Neogen Filter, black – Box of 50
6500	m-Endo Broth, 2 mL – Box of 50
6505	m-Green Yeast and Fungi Broth, 2 mL – Box of 50
6510	MI Broth, 2 mL – Box of 50
6515	m-TGE Broth, 2 mL – Box of 50
6525	Orange Serum Broth, 2 mL – Box of 50
6520	PRY Broth, 2 mL – Box of 50
6560	Neogen Filter silicone stopper – Each